

**Annual Report to the Legislature Regarding  
Juvenile Referrals to the  
Texas Juvenile Probation System**

**Calendar Year 2001**

**Prepared by the  
Texas Juvenile Probation Commission**

**August 2002**



## Table of Contents

---

<b>Introduction .....</b>	<b>1</b>
<b>Texas Juvenile Population .....</b>	<b>2</b>
<b>Referral and Disposition Activity in 2001 .....</b>	<b>3</b>
<b>Referrals .....</b>	<b>4</b>
Demographics.....	4
Juvenile Population vs. Referrals .....	5
Referral Rates .....	6
Juvenile Referral History .....	7
Juvenile Re-Contact History .....	8
Offense Distribution .....	9
<b>Dispositions.....</b>	<b>10</b>
Disposition Types .....	10
Demographics.....	11
<b>County-Level Data .....</b>	<b>12</b>

## Introduction

---

The 77<sup>th</sup> Texas Legislature mandated that the Texas Juvenile Probation Commission (TJPC) annually provide a report to the legislature regarding statistical information relating to juvenile referrals. This is the second report fulfilling that obligation. The mandate can be found in the Texas Family Code, Section 58.112, and reads:

*Not later than August 15 of each year, the Texas Juvenile Probation Commission shall submit to the lieutenant governor, the speaker of the house of representatives, and the governor a report that contains the following statistical information relating to children referred to a juvenile court during the preceding year:*

- (1) *the ages, races, and counties of residence of the children transferred to a district court or criminal district court for criminal proceedings; and*
- (2) *the ages, races, and counties of residence of the children committed to the Texas Youth Commission, placed on probation, or discharged without any disposition.*

The TJPC collects data electronically from all juvenile probation departments in Texas. Departments submit case file data through a CASEWORKER system developed by the TJPC, or through a system compatible with CASEWORKER developed by their individual county. 2001 was the first year that all 254 Texas counties were able to submit their data electronically as required.

CASEWORKER was created by TJPC in 1985 to facilitate and standardize the collection, storage and retrieval of caseload information. In order to keep up with the changing system, the program has evolved through a number of revisions since it was created. The latest edition of the program, CASEWORKER/4, is utilized in 97% of the 254 Texas counties.

### Flowchart of Juvenile Justice Data

Juvenile activity occurs in communities where children are referred to the juvenile justice system



Data relating to activity is entered and managed in local juvenile probation departments (either using CASEWORKER or other compatible system)



Data from each local department is submitted to TJPC to be maintained and analyzed in a statewide database

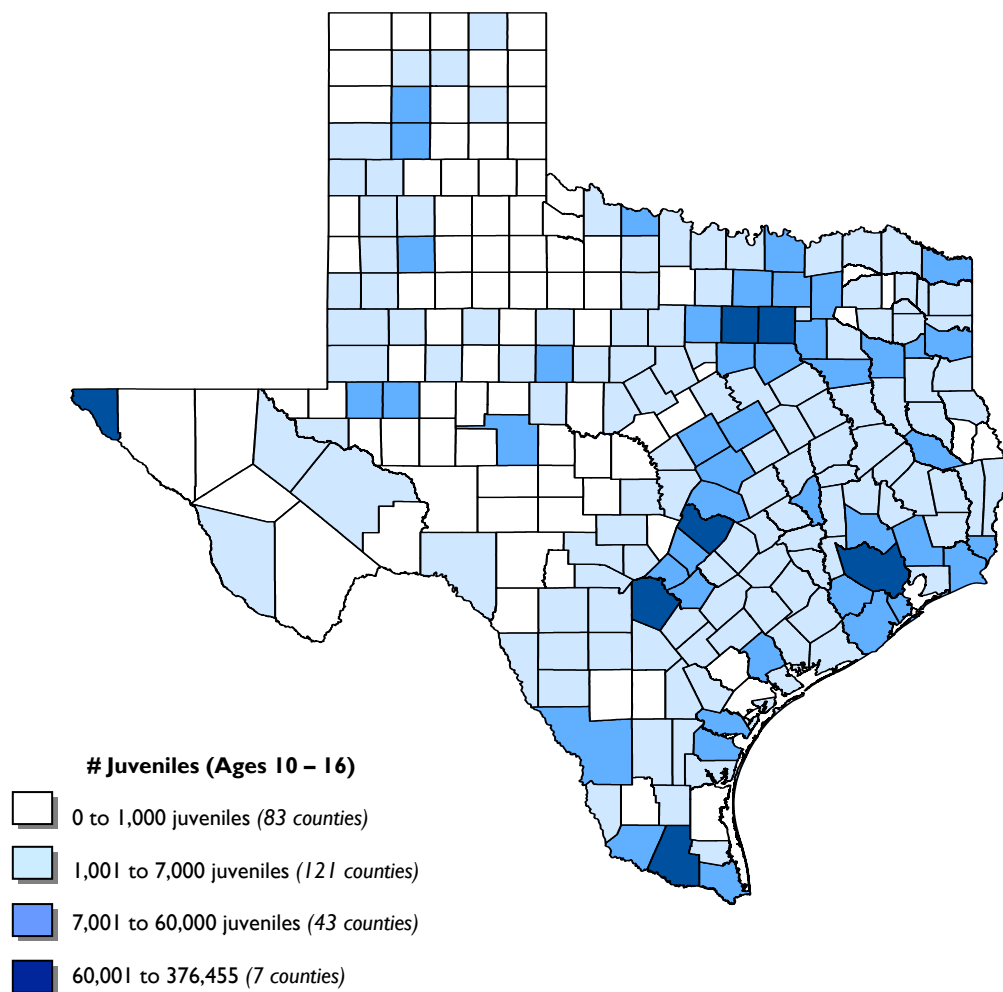


## Texas Juvenile Population

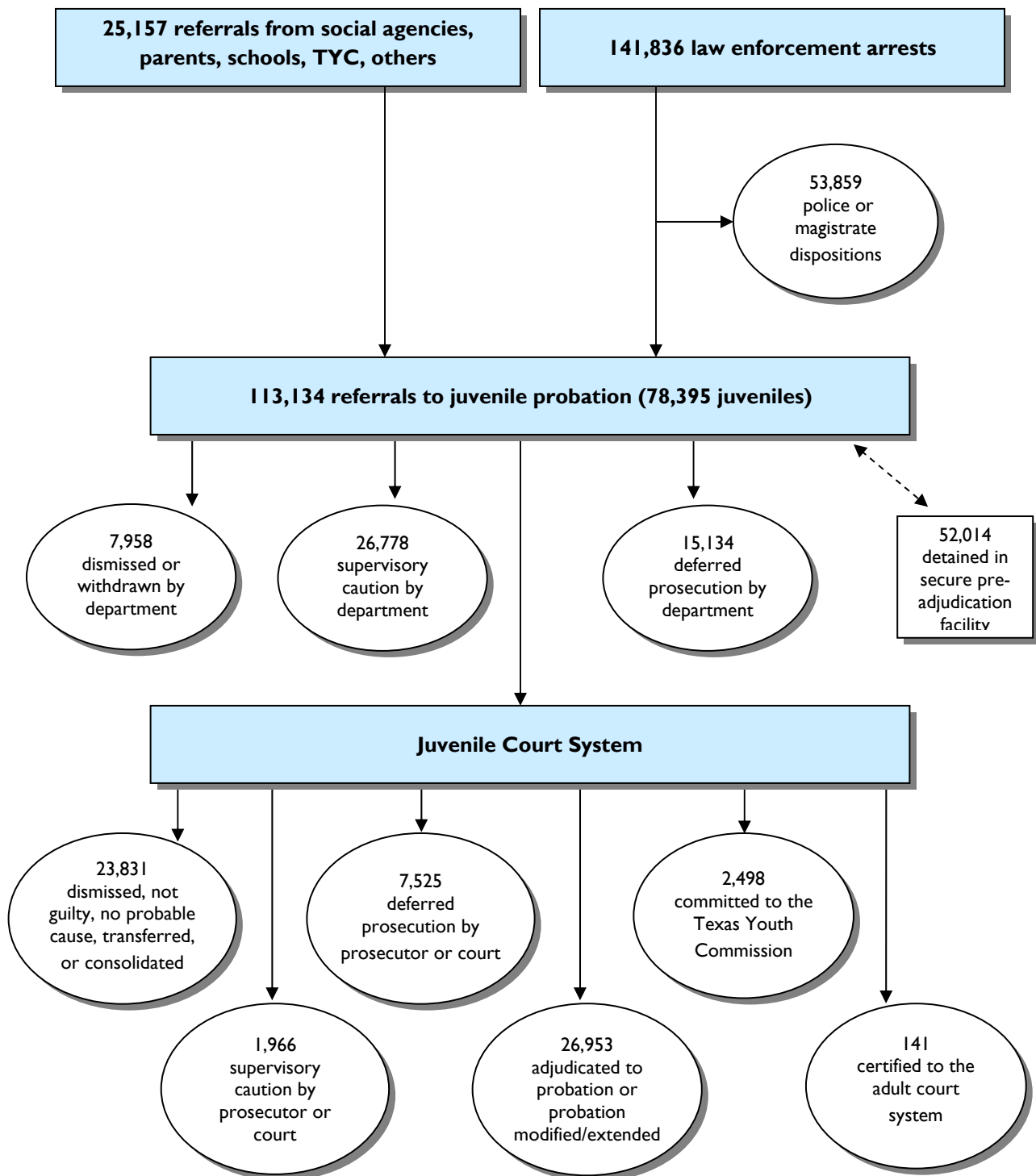
**Juvenile Population by Race and Age in 2001**

	Age 10	Age 11	Age 12	Age 13	Age 14	Age 15	Age 16	Total
<b>African American</b>	46,207	46,472	44,449	43,980	43,187	43,156	42,649	<b>310,100</b>
<b>Anglo</b>	147,256	150,076	147,983	149,207	149,430	152,466	151,692	<b>1,048,110</b>
<b>Hispanic</b>	137,024	133,611	127,266	126,658	124,855	124,301	124,939	<b>898,654</b>
<b>Other</b>	10,107	10,133	10,381	10,148	9,868	10,007	10,237	<b>70,881</b>
<b>Total</b>	<b>340,594</b>	<b>340,292</b>	<b>330,079</b>	<b>329,993</b>	<b>327,340</b>	<b>329,930</b>	<b>329,517</b>	<b>2,327,745</b>

**Texas Juvenile Population in 2001**



## Referral and Disposition Activity in 2001



\* Note: The chart on this page illustrates referrals that occurred in calendar year 2001, and dispositions that occurred in 2001. The juveniles who represent these numbers are not necessarily one in the same (i.e., a juvenile can be referred during one year and disposed of in another). Therefore, the number of referrals does not equal the number of dispositions.

There were 113,134 referrals to juvenile probation authorities in Texas, a decrease of 0.01% from 2000. Though extremely small, this was the sixth consecutive decrease in total referrals since 1995. This decrease occurred while there was an increase (2.2%) in the projected juvenile-aged population based on Texas State Data Center projections.

More than 71% of all referrals in 2001 were male. The proportion of female offenders has gradually increased over the years – 24% one decade ago to 29% in 2001. Females comprised a larger percentage of the less severe offenses. Females committed 24% of all delinquent offenses and 47% of all CINS offenses.

While Anglo youth make up nearly half (45%) of the juvenile population, they accounted for only 35% of the referrals. Hispanic juveniles were the second most populous group (39%) but accounted for the most referrals in 2001, 41%. African American youth constituted 13% of the population and 23% of the referrals.

The average age of juvenile referrals was between 14 and 15 years of age. However, sixteen-year-old youths were referred to juvenile probation more frequently than any other age.

More than half (57%) of the juveniles referred in 2001 were living with one parent, and one third were living with two parents. Most of the remaining youth lived with other relatives, such as grandparents or an aunt and uncle.

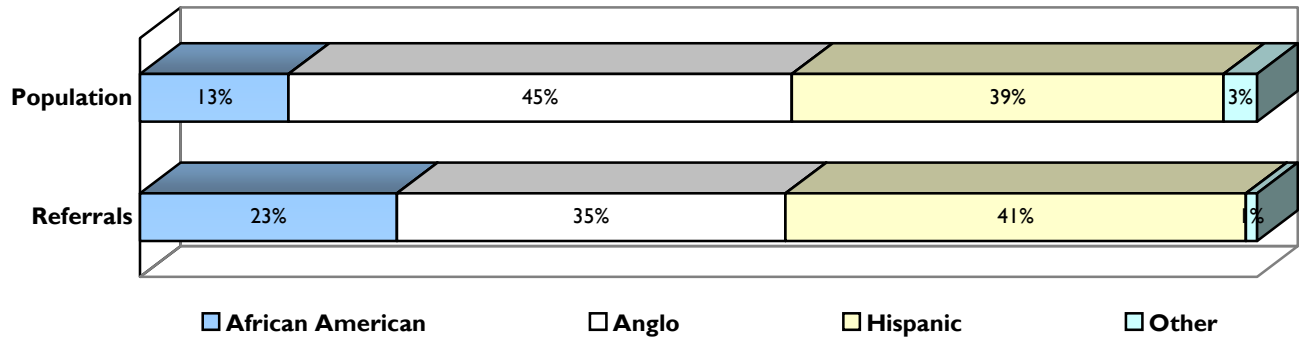
Over eight out of ten juveniles referred were attending regular school. The remaining juveniles were in an alternative education center, had been suspended or expelled, or had dropped out of school entirely.

### Race, Gender and Age of Juvenile Referrals in 2001

	African American		Anglo		Hispanic		Other		Total per Age
	Female	Male	Female	Male	Female	Male	Female	Male	
Ages 10-12	653 25.1%	1,953 74.9%	800 25.0%	2,395 75.0%	1,158 29.0%	2,833 71.0%	20 31.7%	43 68.3%	9,855 8.7%
Ages 13-14	2,452 30.0%	5,711 70.0%	3,665 32.4%	7,634 67.6%	5,052 32.1%	10,663 67.9%	92 31.9%	196 68.1%	35,465 31.4%
Ages 15-16	3,967 27.5%	10,439 72.5%	7,290 31.1%	16,175 68.9%	6,594 25.8%	18,958 74.2%	219 30.4%	502 69.6%	64,144 56.7%
Ages 17+	171 19.4%	712 80.6%	328 23.3%	1,080 76.7%	252 18.9%	1,082 81.1%	13 28.9%	32 71.1%	3,670 3.2%
Total per Gender	7,243 27.8%	18,815 72.2%	12,083 30.7%	27,284 69.3%	13,056 28.0%	33,536 72.0%	344 30.8%	773 69.2%	113,134
Total per Race	26,058 23.0%		39,367 34.8%		46,592 41.2%		1,117 1.0%		

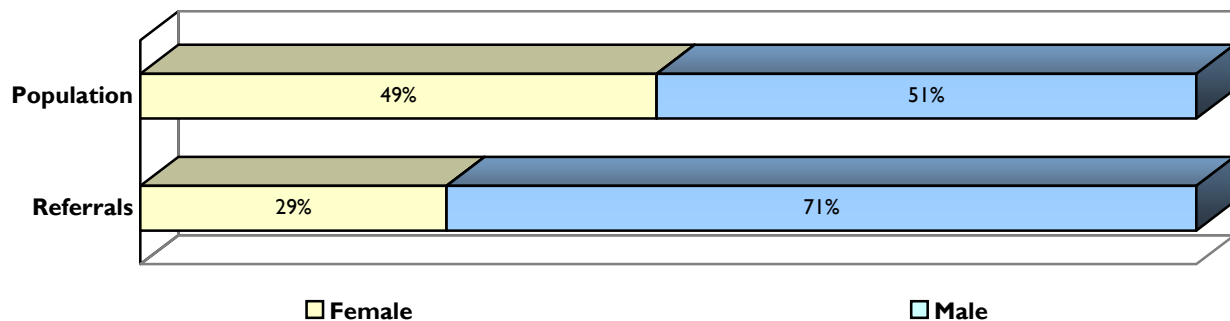
A comparison of the racial breakdown of the statewide juvenile population to the racial breakdown of referrals shows that African American youth are more heavily represented as juvenile referrals. Anglo youth are more prevalent in the population than in referrals. Hispanic and other youth are similarly represented in population and referrals.

**Race of Juvenile Population vs. Referrals**



A similar comparison of the gender of the statewide juvenile population to the referrals shows a heavy representation of males in the juvenile system. While the population is nearly evenly split between males and females, nearly three quarters of the referrals were by male youth.

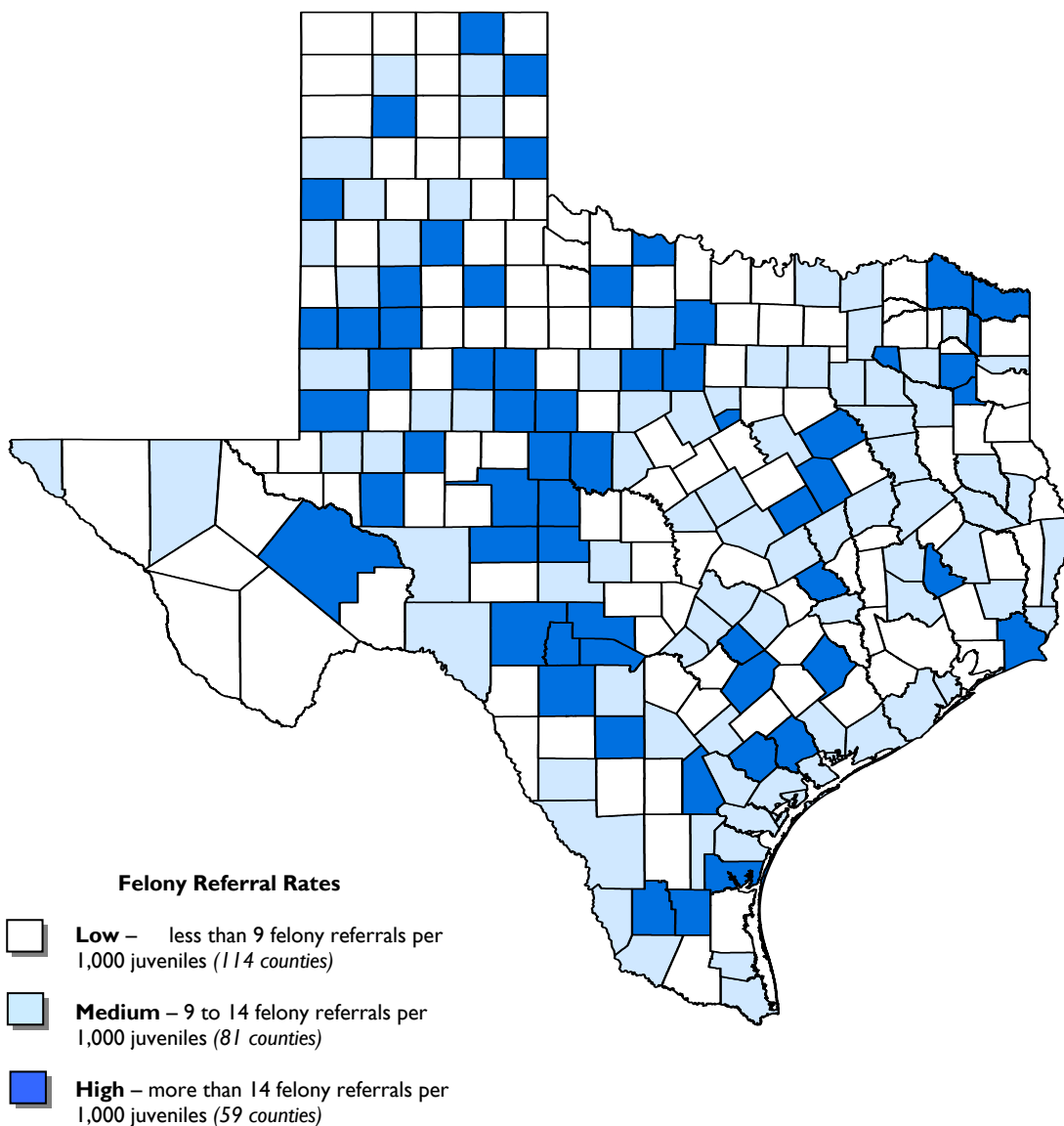
**Gender of Juvenile Population vs. Referrals**



The average referral rate in 2001 for Texas juvenile probation departments was 48.6 referrals per 1,000 juveniles in the population.

The following map illustrates felony referral rates for 2001 throughout the state. As illustrated on the map, high felony referral rates occur in all regions of the state – not just in the urban counties. In fact, in the seven largest counties, Dallas, El Paso, Tarrant and Travis counties are in the medium-rate group, while Bexar, Harris and Hidalgo counties are in the low-rate group. Statewide, the average felony referral rate in 2001 was 10.1 referrals per 1,000 juveniles in the population, with a range from zero to 45.0.

**Felony Referral Rates per 1,000 Juveniles in 2001**

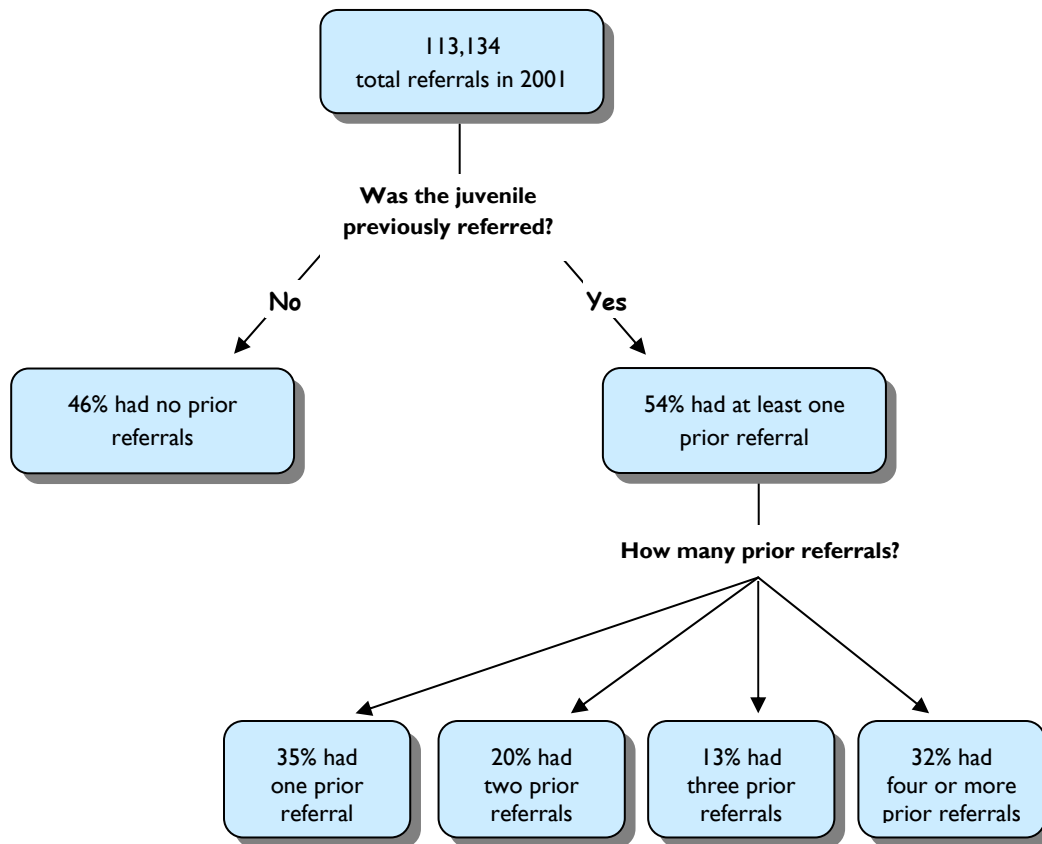




More than half of the referrals (54%) in 2001 had been referred before, with 26% having been previously adjudicated by the courts and 0.4% having been previously committed to the TYC.

Of those with prior referrals, 42% had a felony as the most severe offense in their referral history; 44% had a misdemeanor A or B offense as the most serious offense; and 14% had a CINS offense as the most serious offense.

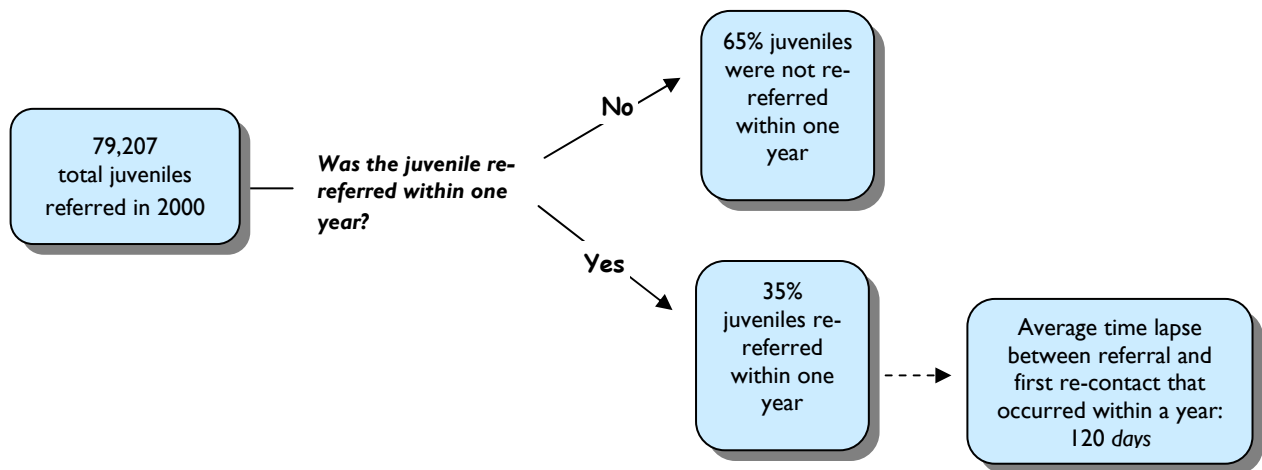
## Juvenile History for Referrals in 2001



As illustrated in the chart below, two thirds of the juveniles referred in 2000 did not have a re-contact (i.e., a subsequent referral) within one year. The remaining one third did return within the year with a subsequent referral. This subsequent contact occurred an average of 120 days after the first referral in 2000.

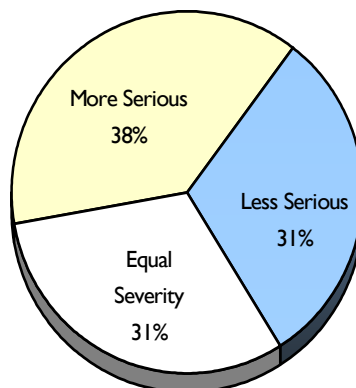
Of those whose first referral in 2000 was for a felony offense, 35% had a re-contact with the probation department. For misdemeanor A or B offenses, 31% had a re-contact; for violation of probation, 51% had a re-contact; and for CINS offenses, 38% had a re-contact.

## 2000 Re-Contact with Juvenile Probation Departments



When a subsequent referral did occur, slightly more than one-third (38%) of the juveniles were referred with a more serious offense on the initial re-contact; slightly less than one-third (31%) returned with an offense of equal severity; and slightly less than one-third (31%) returned with a less severe offense.

## Offense Severity Rate of Initial Re-Contact with Juvenile Probation



The percent of total referrals that were for alleged felony offenses has remained consistently at or just over 20 percent during the past three years. Of this number, the percent referred for violent felony offenses has increased very slightly, while the percent of non-violent felony offenses has remained the same.

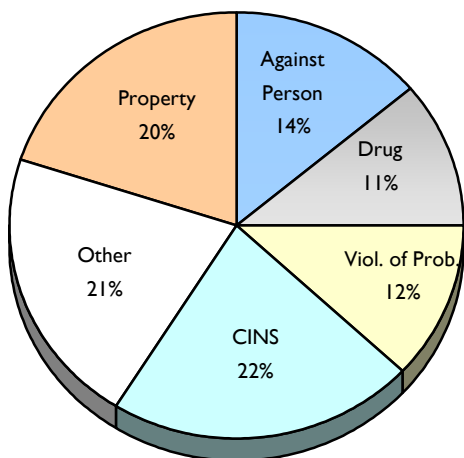
While as a percent of total referrals violent felony referrals slightly increased, the actual number of referrals slightly decreased from 6,346 in 2000 to 6,344 in 2001. Within this category, homicide and attempted homicide referrals decreased 23% and 46% respectively from 2000. At the same time, sexual assault referrals increased 7%. The number of robbery and aggravated assault referrals remained relatively stable.

The category of misdemeanor A & B violations (which also includes contempt of magistrate orders) also remained relatively consistent as a percent of total referrals over the past three years. Nearly half (45%) of all referrals in 2001 were for these alleged, non-felony delinquent offenses.

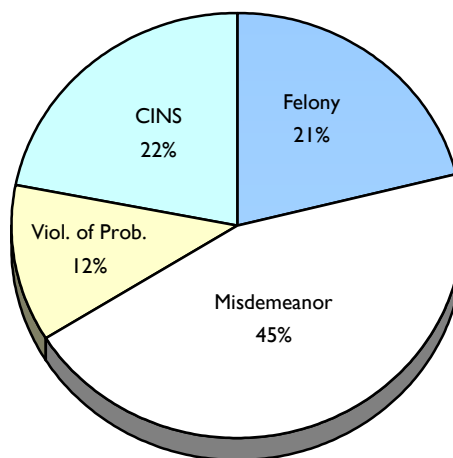
Violation of probation order referrals have also remained relatively consistent as a percentage of total referrals. From 2000 to 2001, the actual number of violation of probation order referrals increased 4% from 13,111 in 2000 to 13,664 in 2001.

The number of CINS offense referrals decreased 5%, from 26,116 in 2000 to 24,695 in 2001. As a percent of the total number of referrals, they have consistently decreased over the past three years. Within this category, the number of status offense referrals decreased by over 2%, while the greatest change occurred with misdemeanor C and other non-status CINS offense referrals – a decrease of 12% from 2000.

**Referrals by Offense Category in 2001**



**Referrals by Offense Type in 2001**



## Dispositions

## Disposition Types

Dispositions were made in 112,784 juvenile cases in calendar year 2001. Juvenile probation departments disposed of 49,870 of these cases, with 7,958 cases dismissed or withdrawn, 26,778 cases given supervisory caution, and 15,134 cases placed on deferred prosecution.

Juvenile prosecutors resolved an additional 14,376 cases. Prosecutors disposed of 1,155 cases with supervisory caution and 4,085 with deferred prosecution. No probable cause was found on 2,918 referrals, while 6,218 were refused and non-suited.

The remaining 48,538 cases were resolved by the juvenile court. Of these, the court ordered supervisory caution to 811 cases; deferred prosecution to 3,440 cases; adjudicated new or modified probation to 26,953 cases; certified and transferred to adult court 141 cases; adjudicated and committed to TYC 2,498 cases (2,336 with indeterminate sentences and 162 with determinate sentences); and consolidated, transferred, dismissed, or found not guilty 14,695 cases.

### Dispositions by Offense Severity in 2001

	CINS	Violation of Probation	Misdemeanor A & B	Felony	Total
<b>Supervisory Caution</b>	14,026 62.6%	4,863 40.9%	8,713 17.7%	1,142 5.8%	<b>28,744</b> <b>27.9%</b>
<b>Deferred Prosecution</b>	3,066 13.7%	3 0.0%	16,827 34.1%	2,763 14.1%	<b>22,659</b> <b>22.0%</b>
<b>Adjudicated Probation</b>	801 3.6%	4,114 34.6%	13,198 26.8%	8,840 45.2%	<b>26,953</b> <b>26.1%</b>
<b>TYC</b>	0 0.0%	886 7.4%	360 0.7%	1,252 6.4%	<b>2,498</b> <b>2.4%</b>
<b>Certified as Adult</b>	0 0.0%	0 0.0%	0 0.0%	141 0.7%	<b>141</b> <b>0.1%</b>
<b>Other*</b>	4,521 20.2%	2,038 17.1%	10,207 20.7%	5,410 27.7%	<b>22,176</b> <b>21.5%</b>
<b>Total</b>	<b>22,414</b> <b>100.0%</b>	<b>11,904</b> <b>100.0%</b>	<b>49,305</b> <b>100.0%</b>	<b>19,548</b> <b>100.0%</b>	<b>103,171</b> <b>100.0%</b>

\* Table does not include the 9,613 consolidated dispositions. "Other" includes dispositions of dismissed, withdrawn, no probable cause, refused/non-suited, not guilty, and transferred.

### Race and Gender of Juvenile Dispositions in 2001\*

	African American		Anglo		Hispanic		Other		Total per Disposition
	Female	Male	Female	Male	Female	Male	Female	Male	
Supervisory Caution	2,522 37.3%	3,991 23.7%	4,605 40.3%	6,436 25.5%	4,298 35.4%	6,605 22.2%	132 42.2%	155 21.6%	28,744 27.9%
Deferred Prosecution	1,510 22.4%	2,660 15.8%	2,728 23.9%	6,159 24.4%	3,127 25.8%	6,213 20.9%	96 30.7%	166 23.2%	22,659 22.0%
Adjudicated Probation	1,346 19.9%	5,181 30.8%	1,912 16.7%	6,852 27.2%	2,247 18.5%	9,168 30.8%	25 8.0%	222 31.0%	26,953 26.1%
TYC	94 1.4%	779 4.6%	79 0.7%	584 2.3%	73 0.6%	868 2.9%	0 0.0%	21 2.9%	2,498 2.4%
Certified as Adult	3 0.0%	56 0.3%	0 0.0%	28 0.1%	2 0.0%	51 0.2%	0 0.0%	1 0.1%	141 0.1%
Other*	1,281 19.0%	4,142 24.6%	2,105 18.4%	5,171 20.5%	2,394 19.7%	6,872 23.1%	60 19.2%	151 21.1%	22,176 21.5%
Total per Gender	6,756 100.0%	16,809 100.0%	11,429 100.0%	25,230 100.0%	12,141 100.0%	29,777 100.0%	313 100.0%	716 100.0%	103,171
Total per Race	23,565 22.8%		36,659 35.5%		41,918 40.6%		1,029 1.0%		

\* Table does not include 9,613 consolidated dispositions. "Other" includes dispositions of dismissed, withdrawn, no probable cause, refused/non-suited, not guilty and transferred.

### Dispositions by Age in 2001\*

	Ages 10 to 12	Ages 13 to 14	Ages 15 to 16	Ages 17+	Total
<b>Supervisory Caution</b>	14,026 62.6%	4,863 40.9%	8,713 17.7%	1,142 5.8%	<b>28,744</b> <b>27.9%</b>
<b>Deferred Prosecution</b>	3,066 13.7%	3 0.0%	16,827 34.1%	2,763 14.1%	<b>22,659</b> <b>22.0%</b>
<b>Adjudicated Probation</b>	801 3.6%	4,114 34.6%	13,198 26.8%	8,840 45.2%	<b>26,953</b> <b>26.1%</b>
<b>TYC</b>	0 0.0%	886 7.4%	360 0.7%	1,252 6.4%	<b>2,498</b> <b>2.4%</b>
<b>Certified as Adult</b>	0 0.0%	0 0.0%	0 0.0%	141 0.7%	<b>141</b> <b>0.1%</b>
<b>Other*</b>	4,521 20.2%	2,038 17.1%	10,207 20.7%	5,410 27.7%	<b>22,176</b> <b>21.5%</b>
<b>Total</b>	<b>22,414</b> <b>100.0%</b>	<b>11,904</b> <b>100.0%</b>	<b>49,305</b> <b>100.0%</b>	<b>19,548</b> <b>100.0%</b>	<b>103,171</b> <b>100.0%</b>

\* Table does not include the 9,613 consolidated dispositions. "Other" includes dispositions of dismissed, withdrawn, no probable cause, refused/non-suited, not guilty, and transferred.

	Total Referrals	Dispositions							Total Dispos.
		Super. Caution	Deferred Pros.	Adjud. Prob.	TYC	Cert. as Adult	Other	Consolidated	
Anderson	277	11	75	50	5	0	171	58	370
Andrews	119	25	31	42	1	1	31	0	131
Angelina	327	58	70	66	14	0	68	42	318
Aransas	282	97	55	43	9	0	44	4	252
Archer	9	0	4	3	0	0	1	0	8
Armstrong	0	0	0	0	0	0	0	0	0
Atascosa	165	26	62	49	4	1	27	0	169
Austin	56	18	17	8	3	0	8	2	56
Bailey	26	6	6	8	1	0	7	2	30
Bandera	76	8	35	22	0	0	1	1	67
Bastrop	312	106	99	85	9	2	40	41	382
Baylor	15	0	1	9	3	0	2	1	16
Bee	233	59	29	58	8	0	37	12	203
Bell	1656	470	392	236	28	0	410	94	1630
Bexar	8491	158	2140	2241	224	15	825	3708	9311
Blanco	12	1	6	0	0	0	1	0	8
Borden	0	0	0	0	0	0	0	0	0
Bosque	45	1	16	20	1	0	6	2	46
Bowie	761	548	80	56	5	0	47	21	757
Brazoria	2395	1435	62	432	24	1	294	93	2341
Brazos	1389	667	221	234	17	1	221	34	1395
Brewster	29	9	6	2	0	0	4	4	25
Briscoe	15	8	2	2	1	0	1	1	15
Brooks	73	5	7	25	0	0	15	9	61
Brown	264	54	78	66	5	1	51	7	262
Burleson	143	21	29	60	4	0	13	20	147
Burnet	173	52	73	37	1	0	10	19	192
Caldwell	306	27	33	117	3	0	76	40	296
Calhoun	152	29	28	41	2	0	26	6	132
Callahan	37	8	20	0	0	0	9	1	38
Cameron	1946	424	378	468	34	2	410	97	1813
Camp	27	9	13	0	0	0	8	0	30
Carson	0	0	0	0	0	0	0	0	0
Cass	120	77	26	18	1	0	6	0	128
Castro	49	19	10	14	0	0	3	2	48
Chambers	37	3	0	22	1	1	3	0	30
Cherokee	171	48	89	25	1	0	20	12	195
Childress	3	0	0	1	0	1	2	0	4
Clay	18	1	8	11	1	0	1	0	22
Cochran	24	0	3	20	1	0	0	0	24
Coke	7	2	3	1	0	0	2	0	8
Coleman	46	11	21	1	4	0	5	5	47
Collin	1460	197	471	361	20	0	281	145	1475
Collingsworth	11	1	4	0	0	0	1	0	6
Colorado	119	6	26	46	3	0	36	14	131
Comal	472	50	112	146	6	0	81	65	460
Comanche	39	2	14	7	1	0	20	0	44
Concho	7	0	2	2	1	0	4	0	9
Cooke	102	11	29	38	0	0	6	3	87
Coryell	263	77	97	51	10	0	14	18	267
Cottle	0	0	0	0	0	0	2	0	2

	Total Referrals	Dispositions							Total Dispos.
		Super. Caution	Deferred Pros.	Adjud. Prob.	TYC	Cert. as Adult	Other	Consolidated	
Crane	7	3	1	1	0	0	1	0	6
Crockett	12	1	4	0	0	0	1	0	6
Crosby	14	0	0	4	1	0	8	0	13
Culberson	7	0	0	0	0	0	0	0	0
Dallam	79	59	7	9	1	0	4	1	81
Dallas	9804	1708	3351	2700	295	4	1733	451	10242
Dawson	219	127	32	45	5	0	8	1	218
Deaf Smith	256	63	87	88	7	1	10	14	270
Delta	29	5	9	6	0	0	9	0	29
Denton	1818	149	441	588	44	1	185	370	1778
Dewitt	204	58	35	43	3	0	25	44	208
Dickens	10	1	2	2	0	0	4	0	9
Dimmit	89	15	48	6	1	0	2	18	90
Donley	0	0	0	0	0	0	0	0	0
Duval	126	12	18	16	0	0	144	0	190
Eastland	47	6	11	6	3	0	6	5	37
Ector	832	239	173	158	8	0	329	32	939
Edwards	14	2	12	2	0	0	0	0	16
Ellis	375	84	91	70	12	2	81	17	357
El Paso	2791	0	387	726	43	1	1204	76	2437
Erath	109	6	37	28	0	0	8	12	91
Falls	131	39	32	30	6	0	20	5	132
Fannin	153	44	56	9	2	2	30	5	148
Fayette	38	9	9	15	2	0	2	0	37
Fisher	24	13	3	0	2	0	2	0	20
Floyd	73	24	23	19	4	0	5	2	77
Foard	0	0	0	0	0	0	0	0	0
Fort Bend	1557	242	421	457	28	1	462	35	1646
Franklin	42	12	15	4	2	0	5	0	38
Freestone	31	3	11	10	2	0	7	1	34
Frio	135	11	46	9	0	0	38	16	120
Gaines	58	7	15	17	0	0	33	0	72
Galveston	1549	328	271	498	51	0	289	102	1539
Garza	29	7	8	10	0	0	3	1	29
Gillespie	34	13	21	0	0	0	0	0	34
Glasscock	4	0	0	0	0	0	0	0	0
Goliad	46	0	16	13	1	0	6	0	36
Gonzales	139	12	43	30	2	0	25	16	128
Gray	179	46	46	75	6	0	0	0	173
Grayson	389	109	78	75	6	0	96	41	405
Gregg	904	284	203	145	20	0	112	74	838
Grimes	62	0	21	4	0	0	5	6	36
Guadalupe	781	333	214	99	4	2	88	35	775
Hale	196	2	44	126	1	0	27	2	202
Hall	0	0	0	0	0	0	0	0	0
Hamilton	21	3	6	3	0	0	6	0	18
Hansford	4	0	1	2	1	0	0	0	4
Hardeman	0	0	0	0	0	0	0	0	0
Hardin	327	144	52	51	15	1	43	23	329
Harris	16010	2443	1877	5474	438	47	4388	749	15416
Harrison	376	58	97	89	9	1	112	22	388

	Total Referrals	Dispositions							Total Dispos.
		Super. Caution	Deferred Pros.	Adjud. Prob.	TYC	Cert. as Adult	Other	Consolidated	
Hartley	17	9	3	5	0	0	0	1	18
Haskell	12	1	0	7	1	0	5	0	14
Hays	679	261	198	149	6	0	78	34	726
Hemphill	29	5	7	3	2	0	8	2	27
Henderson	339	68	58	54	6	0	97	48	331
Hidalgo	1943	171	485	458	23	0	794	136	2067
Hill	131	11	36	66	7	0	14	1	135
Hockley	123	56	8	40	9	0	8	0	121
Hood	292	60	104	60	18	0	56	8	306
Hopkins	184	53	55	57	7	0	22	5	199
Houston	89	14	9	24	3	0	16	11	77
Howard	269	161	33	23	5	0	34	7	263
Hudspeth	4	0	0	0	0	0	0	0	0
Hunt	426	168	24	85	10	0	110	47	444
Hutchinson	181	72	62	26	0	0	15	1	176
Irion	8	3	2	0	0	0	2	0	7
Jack	44	12	11	8	0	0	14	1	46
Jackson	57	15	21	22	6	0	19	0	83
Jasper	82	11	22	30	5	0	13	6	87
Jeff Davis	1	0	0	0	0	0	1	0	1
Jefferson	2078	649	272	312	83	11	411	13	1751
Jim Hogg	116	0	13	5	0	0	96	0	114
Jim Wells	389	120	149	20	0	0	132	38	459
Johnson	438	112	111	117	6	1	85	23	455
Jones	51	13	19	6	2	0	6	5	51
Karnes	95	23	35	24	2	0	58	3	145
Kaufman	314	127	64	52	4	0	63	4	314
Kendall	76	24	19	25	1	0	15	3	87
Kenedy	0	0	0	0	0	0	0	0	0
Kent	1	0	0	0	0	0	1	0	1
Kerr	420	123	35	119	9	0	103	38	427
Kimble	11	1	2	4	1	0	1	1	10
King	0	0	0	0	0	0	0	0	0
Kinney	8	1	6	3	0	0	0	0	10
Kleberg	148	15	35	37	4	0	50	1	142
Knox	4	0	0	4	0	0	0	0	4
Lamar	124	10	69	26	4	4	3	11	127
Lamb	63	12	19	25	1	1	10	0	68
Lampasas	157	42	54	23	2	0	17	21	159
Lasalle	83	17	39	1	0	0	14	0	71
Lavaca	41	4	9	17	2	0	3	7	42
Lee	43	0	4	27	3	0	1	0	35
Leon	43	10	13	7	1	0	11	0	42
Liberty	258	87	127	7	4	0	18	24	267
Limestone	114	3	14	27	4	0	40	15	103
Lipscomb	9	1	3	1	0	0	3	0	8
Live Oak	51	0	3	22	2	0	11	0	38
Llano	44	14	20	3	0	0	9	7	53
Loving	0	0	0	0	0	0	0	0	0
Lubbock	2034	549	454	404	54	0	444	267	2172
Lynn	30	2	15	9	0	0	3	1	30



	Total Referrals	Dispositions							Total Dispos.
		Super. Caution	Deferred Pros.	Adjud. Prob.	TYC	Cert. as Adult	Other	Consolidated	
Mc Culloch	36	4	7	17	1	0	4	1	34
Mc Lennan	1810	471	498	393	68	2	471	288	2191
Mc Mullen	4	0	2	2	0	0	0	0	4
Madison	12	0	3	10	0	0	2	1	16
Marion	30	5	9	7	2	0	6	2	31
Martin	35	26	1	9	1	0	1	0	38
Mason	23	0	13	7	0	0	4	0	24
Matagorda	344	191	42	52	7	0	34	19	345
Maverick	245	116	49	22	9	1	36	3	236
Medina	175	103	54	14	4	0	17	9	201
Menard	9	1	1	4	1	0	2	0	9
Midland	811	204	132	128	17	5	159	108	753
Milam	84	21	25	45	4	0	13	2	110
Mills	4	1	1	2	0	0	1	0	5
Mitchell	79	48	10	6	0	0	6	1	71
Montague	35	1	17	16	0	0	2	0	36
Montgomery	1471	857	21	194	47	0	191	105	1415
Moore	142	59	20	26	4	0	31	14	154
Morris	85	8	20	9	0	0	33	2	72
Motley	3	2	1	0	0	0	2	0	5
Nacogdoches	233	58	55	79	6	0	29	16	243
Navarro	226	48	69	43	5	0	28	8	201
Newton	33	3	13	7	0	0	1	2	26
Nolan	708	537	43	46	5	0	49	26	706
Nueces	3063	1215	613	379	26	0	856	165	3254
Ochiltree	39	0	11	16	1	0	5	0	33
Oldham	4	1	0	0	1	0	5	1	8
Orange	353	76	59	88	12	0	102	23	360
Palo Pinto	136	24	48	39	11	0	4	14	140
Panola	57	12	19	15	1	0	14	0	61
Parker	432	217	131	59	5	0	31	5	448
Parmer	45	8	6	13	1	0	2	7	37
Pecos	109	48	28	17	0	0	16	0	109
Polk	200	10	48	118	10	0	14	1	201
Potter	1075	572	149	154	33	2	50	141	1101
Presidio	9	1	1	2	0	0	3	1	8
Rains	48	10	12	25	2	0	7	0	56
Randall	475	154	72	138	8	1	134	10	517
Reagan	15	4	3	2	0	0	6	0	15
Real	15	0	11	4	0	0	1	0	16
Red River	65	17	19	8	1	0	23	2	70
Reeves	106	16	23	34	1	0	43	3	120
Refugio	73	15	17	8	4	0	19	1	64
Roberts	7	0	5	1	1	0	0	0	7
Robertson	67	18	20	34	4	1	6	5	88
Rockwall	120	18	52	26	1	0	17	3	117
Runnels	71	15	15	11	0	0	11	2	54
Rusk	126	40	27	27	1	0	17	8	120
Sabine	8	1	4	3	0	0	2	0	10
San Augustine	11	0	3	3	1	0	3	2	12
San Jacinto	68	1	14	16	4	0	15	0	50

	Total Referrals	Dispositions							Total Dispos.
		Super. Caution	Deferred Pros.	Adjud. Prob.	TYC	Cert. as Adult	Other	Consolidated	
San Patricio	546	171	93	105	6	1	75	21	472
San Saba	15	3	4	3	0	0	0	1	11
Schleicher	15	3	5	1	0	0	6	0	15
Scurry	80	16	20	21	2	0	4	8	71
Shackelford	8	3	2	0	0	0	1	0	6
Shelby	33	11	11	8	0	0	0	1	31
Sherman	14	8	0	2	1	0	1	0	12
Smith	888	177	134	326	26	4	130	135	932
Somervell	35	5	8	13	0	0	9	0	35
Starr	304	76	131	83	0	0	22	2	314
Stephens	37	3	14	12	0	0	6	3	38
Sterling	2	0	0	1	0	0	1	0	2
Stonewall	6	0	0	1	0	0	3	0	4
Sutton	20	12	5	0	0	0	3	0	20
Swisher	33	10	8	10	2	0	5	2	37
Tarrant	7709	3330	724	1659	158	6	1119	295	7291
Taylor	843	140	319	91	15	0	87	97	749
Terrell	0	0	0	1	0	0	0	0	1
Terry	107	28	21	30	1	0	15	16	111
Throckmorton	1	0	0	0	0	0	1	0	1
Titus	118	51	23	12	4	0	24	1	115
Tom Green	951	195	197	213	8	5	164	108	890
Travis	4607	1537	567	996	80	4	1072	0	4256
Trinity	24	3	8	7	0	0	10	0	28
Tyler	67	11	20	13	0	0	11	15	70
Upshur	257	146	61	13	4	0	25	1	250
Upton	23	1	6	7	0	0	5	0	19
Uvalde	214	73	28	38	3	0	65	17	224
Val Verde	221	77	134	36	5	0	3	0	255
Van Zandt	303	136	106	10	2	0	35	23	312
Victoria	1318	1040	47	199	17	0	40	0	1343
Walker	116	5	37	56	9	0	33	2	142
Waller	78	12	26	20	1	0	8	5	72
Ward	98	20	24	34	0	0	22	2	102
Washington	175	39	60	54	4	0	8	11	176
Webb	2006	787	330	315	19	1	187	13	1652
Wharton	142	4	35	50	9	0	42	7	147
Wheeler	11	4	0	2	1	0	1	0	8
Wichita	1043	190	286	169	9	0	180	145	979
Wilbarger	41	4	11	9	0	0	17	0	41
Willacy	67	6	27	24	0	0	10	3	70
Williamson	1181	240	256	280	15	1	233	94	1119
Wilson	212	69	79	7	1	0	40	17	213
Winkler	22	1	13	3	0	1	7	0	25
Wise	125	9	37	52	1	0	21	3	123
Wood	169	52	9	69	2	0	26	9	167
Yoakum	57	6	10	23	4	0	9	3	55
Young	65	10	9	17	0	0	16	2	54
Zapata	194	67	70	22	0	0	9	0	168
Zavala	53	17	29	8	1	0	6	1	62
<b>Total</b>	<b>113,134</b>	<b>28,744</b>	<b>22,659</b>	<b>26,953</b>	<b>2,498</b>	<b>141</b>	<b>22,176</b>	<b>9,613</b>	<b>112,784</b>