



# *Texas Juvenile Probation Commission*

## **Annual Report to Legislature Regarding Juvenile Referrals to Texas Juvenile Probation System**

**Calendar Year 2000**

*August 2001*

# Contents

---

<b>Introduction.....</b>	<b>2</b>
<b>Texas Juvenile Population.....</b>	<b>3</b>
<b>Movement and Dispositions of Referrals .....</b>	<b>4</b>
<b>Referrals.....</b>	<b>5</b>
Demographics.....	5
Juvenile Population vs. Referrals .....	6
Referral Rates .....	7
Juvenile Referral History .....	8
Juvenile Re-Contact History .....	9
Offense Distribution .....	10
<b>Dispositions .....</b>	<b>11</b>
Disposition Types .....	11
Demographics.....	12
<b>County-by-County Data.....</b>	<b>13</b>

# Introduction

---

The 77<sup>th</sup> Texas Legislature mandated that the Texas Juvenile Probation Commission (TJPC) annually provide a report to the legislature regarding statistical information relating to juvenile referrals. This is the first report fulfilling that obligation. The mandate can be found in the Texas Family Code, Section 58.112, and reads:

*Not later than August 15 of each year, the Texas Juvenile Probation Commission shall submit to the lieutenant governor, the speaker of the house of representatives, and the governor a report that contains the following statistical information relating to children referred to a juvenile court during the preceding year:*

- (1) the ages, races, and counties of residence of the children transferred to a district court or criminal district court for criminal proceedings; and*
- (2) the ages, races, and counties of residence of the children committed to the Texas Youth Commission, placed on probation, or discharged without any disposition.*

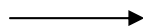
The TJPC collects data electronically from all juvenile probation departments in Texas. Departments submit case file data through a CASEWORKER system developed by the TJPC, or through a system compatible with CASEWORKER developed by their individual county.

CASEWORKER was created by TJPC in 1985 to facilitate and standardize the collection, storage and retrieval of caseload information. In order to keep up with the changing system, the program has evolved through a number of revisions since it was created. The latest edition of the program, CASEWORKER/4, is utilized in 97% of the 254 Texas counties.

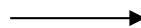
*[NOTE: Data for Bexar County was not included in much of this report. The county is experiencing difficulties in meeting the state data collection requirements and is currently working on their program so that data can correctly be transmitted to the TJPC.]*

## Flowchart of Juvenile Justice Data

Juvenile activity occurs in communities and children are referred to the juvenile justice system



Data relating to activity is entered and managed in local juvenile probation departments (either using CASEWORKER or other compatible system)



Data from each local department is submitted to TJPC to be maintained and analyzed in a statewide database

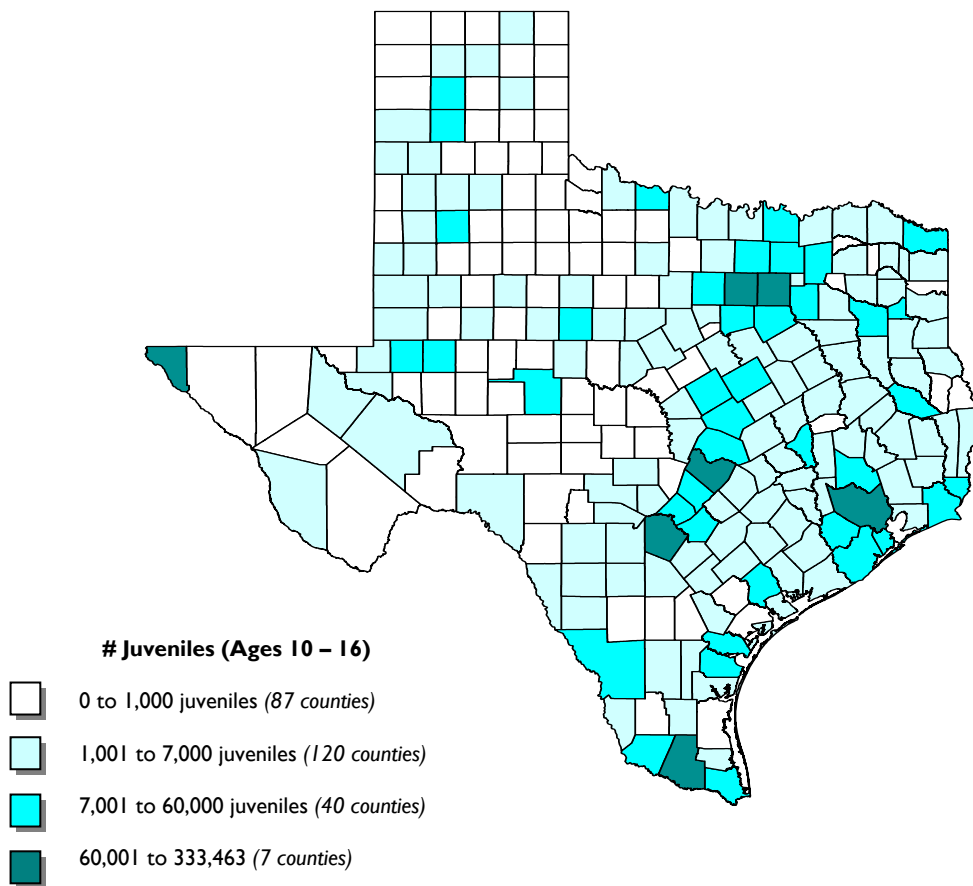


# Texas Juvenile Population

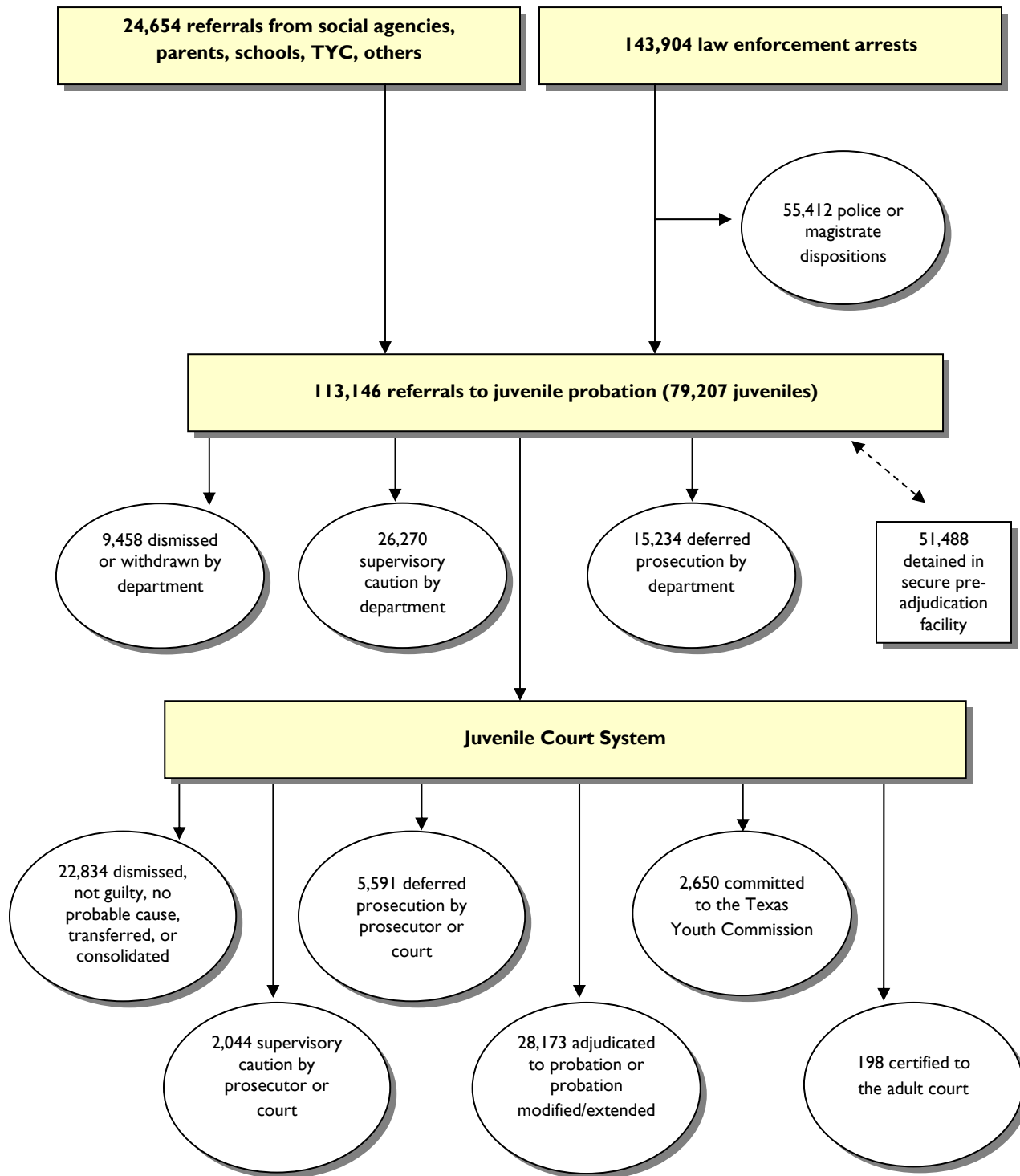
**Juvenile Population by Race and Age in 2000**

	Age 10	Age 11	Age 12	Age 13	Age 14	Age 15	Age 16	Total
<b>African American</b>	40,067	39,339	39,220	38,623	39,048	38,835	38,212	273,344 13.0%
<b>Anglo</b>	145,224	143,386	143,746	144,366	148,573	147,780	146,344	1,019,419 48.4%
<b>Hispanic</b>	108,150	105,189	106,675	107,381	110,104	109,688	111,008	758,195 36.0%
<b>Other</b>	6,796	7,346	7,417	7,640	8,185	8,736	9,185	55,305 2.6%
<b>Total</b>	300,237 14.3%	295,260 14.0%	297,058 14.1%	298,010 14.1%	305,910 14.5%	305,039 14.5%	304,749 14.5%	2,106,263

**Texas Juvenile Population in 2000**



# Movement and Dispositions of Referrals in 2000



\* Note: The chart on this page illustrates referrals that occurred in calendar year 2000 and dispositions that occurred in 2000. The juveniles that represent these numbers are not necessarily one in the same (i.e., a juvenile can be referred during one year and disposed of in another). Therefore, the number of referrals does not equal the number of dispositions.

There were 113,146 referrals to juvenile probation authorities in Texas, a decrease of 4.9% from 1999, the fifth consecutive decrease in total referrals since 1995. This decrease occurred while there was a slight increase (0.6%) in the projected juvenile-aged population. The number of juveniles referred also decreased for the fifth consecutive year in 2000, from 82,096 (average of 1.45 referrals per juvenile) in 1999, to 79,207 (average of 1.43 referrals per juvenile) in 2000.

More than 70% of all referrals in 2000 were male. The proportion of female offenders has gradually increased over the years – 24.0% one decade ago to 29.2% in 2000. The percentage of delinquent offense referrals committed by females was proportional to their occurrence in total referrals - 24.2%. However, CINS offenses were almost equally divided between males and females, with females committing 46.7% of total CINS offenses.

While Anglo youth make up nearly half (48.4%) of the juvenile population, they accounted for only 36.1% of the referrals. Hispanic juveniles were the second most populous group (36.0%), but accounted for the most referrals in 2000, 40.4%. African American youth made up 13.0% of the population and 22.4% of the referrals.

The average age of juvenile referrals was between 14 and 15 years of age. However, sixteen-year-old youths were referred to juvenile probation more frequently than any other age.

More than half of the juveniles referred in 2000 were living with one parent and approximately one third were living with two parents. Most of the remaining youth lived with other relatives, such as grandparents or an aunt and uncle.

Almost nine out of ten juveniles referred were attending regular school. The remaining juveniles were in an alternative education center, suspended, expelled, or dropped out entirely.

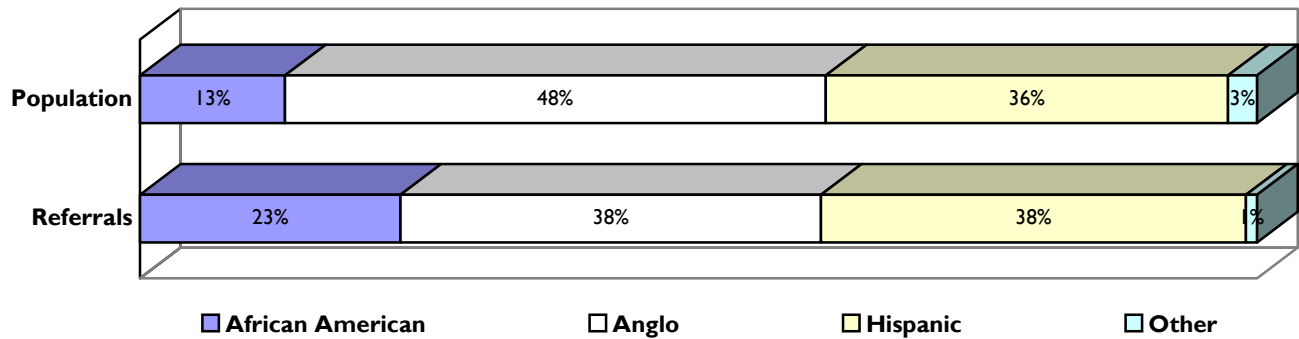
#### Race, Gender and Age of Juvenile Referrals in 2000\*

	African American		Anglo		Hispanic		Other		Total per Age
	Female	Male	Female	Male	Female	Male	Female	Male	
Ages 10-12	668 26.4%	1,863 73.6%	760 23.1%	2,536 76.9%	1,040 29.2%	2,517 70.8%	14 19.4%	58 80.6%	9,456 9.0%
Ages 13-14	2,225 29.2%	5,390 70.8%	3,942 34.2%	7,575 65.8%	4,250 31.5%	9,223 68.5%	90 32.8%	184 67.2%	32,879 31.3%
Ages 15-16	3,734 27.7%	9,736 72.3%	7,268 31.4%	15,873 68.6%	5,767 26.5%	15,975 73.5%	203 29.2%	492 70.8%	59,048 56.2%
Ages 17+	199 22.1%	702 77.9%	369 23.8%	1,179 76.2%	225 19.8%	909 80.2%	13 22.8%	44 77.2%	3,640 3.5%
Total per Gender	6,826 27.8%	17,691 72.2%	12,339 31.2%	27,163 68.8%	11,282 28.3%	28,624 71.7%	320 29.1%	778 70.9%	105,023*
Total per Race	24,517 23.3%		39,502 37.6%		39,906 38.0%		1,098 1.1%		

\* Data does not include the 8,123 referrals in Bexar County, as the data was not available by the categories shown.

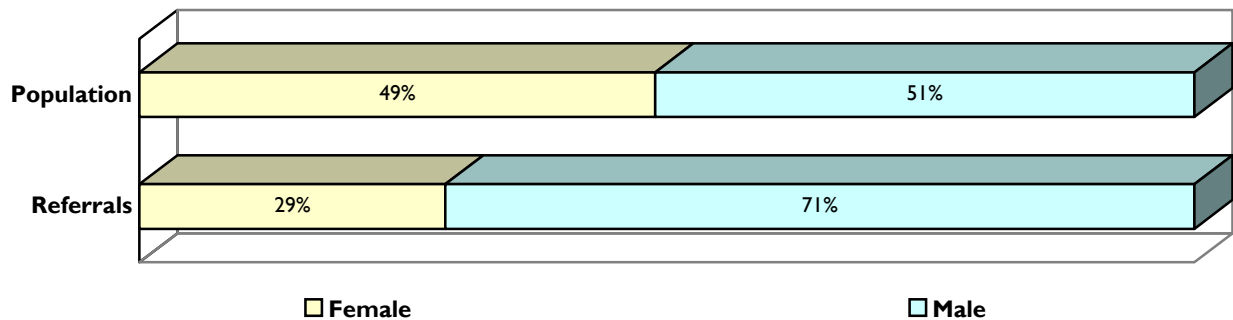
A comparison of the race of the statewide juvenile population to the racial breakdown of referrals shows that African American youth are more heavily represented in juvenile referrals. Anglo youth are more prevalent in the population than in referrals. Hispanic and other youth are similarly represented in population and referrals.

**Race of Juvenile Population vs. Referrals**



A similar comparison of the gender of the statewide juvenile population to the referrals shows the heavy representation of males in the juvenile system. While the population is nearly split between males and females, nearly three quarters of the referrals were by male youth.

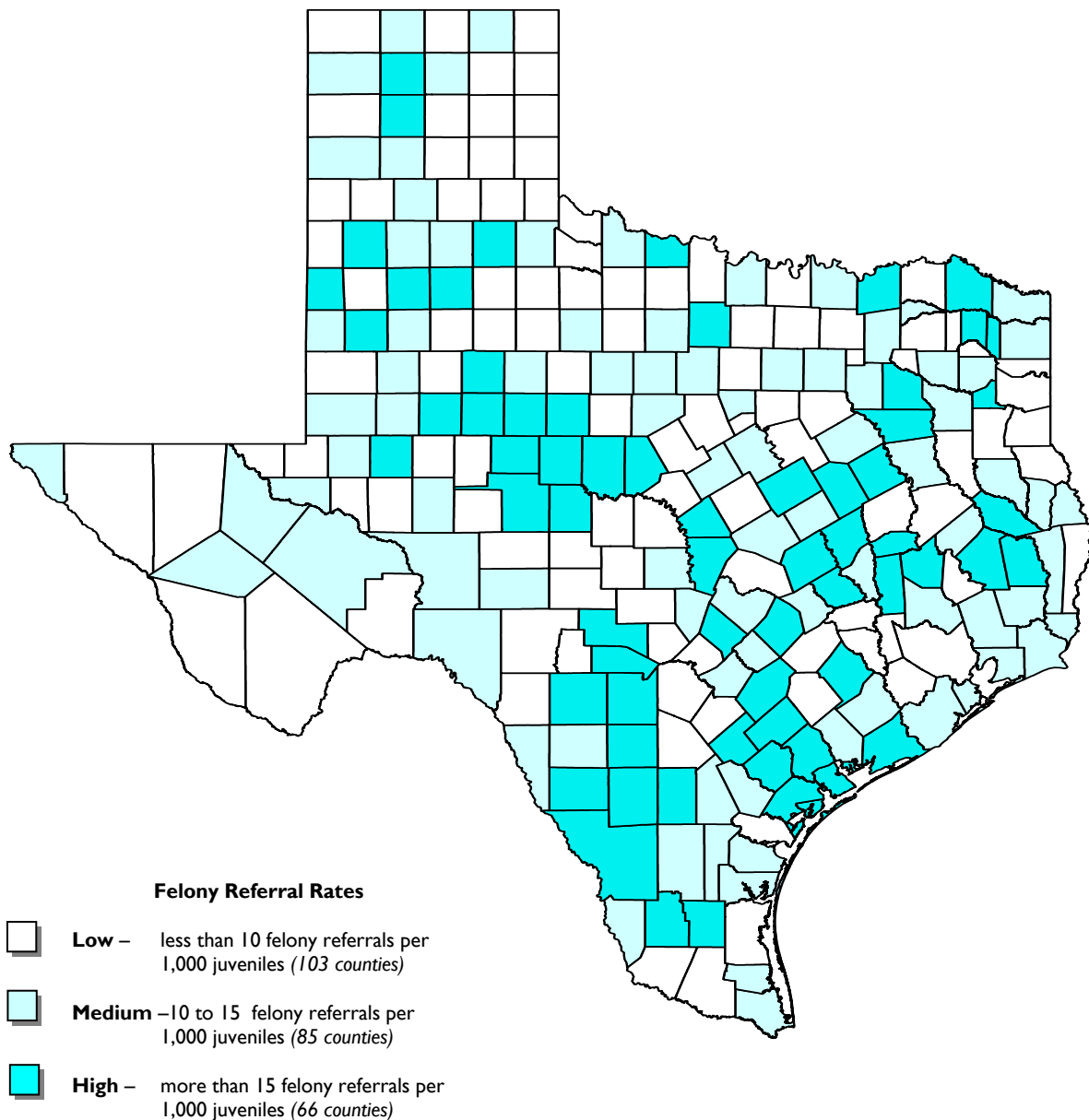
**Gender of Juvenile Population vs. Referrals**



The average total referral rate in 2000 for Texas juvenile probation departments was 53.7 referrals per 1,000 juveniles in the population.

The following map illustrates felony referral rates for 2000 throughout the state. As illustrated on the map, high felony referral rates occur in all regions of the state – not necessarily just in the urban counties. In fact, of the seven largest counties, Dallas, El Paso, Tarrant and Travis counties are in the medium-rate group, while Bexar, Harris and Hidalgo counties are in the low-rate group.

**Felony Referral Rates per 1,000 Juveniles in 2000**

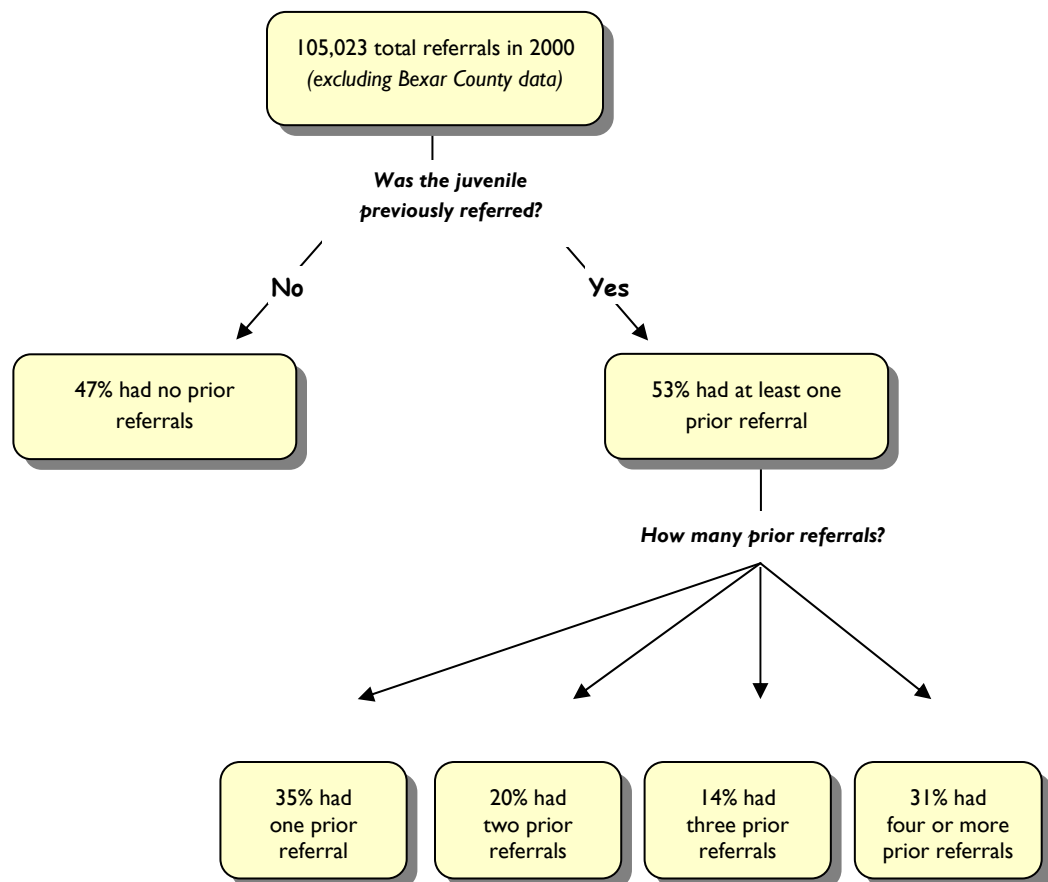




More than half of the referrals (53%) had been referred before, with 25% having been previously adjudicated by the courts and 0.6% having been previously committed to the Texas Youth Commission.

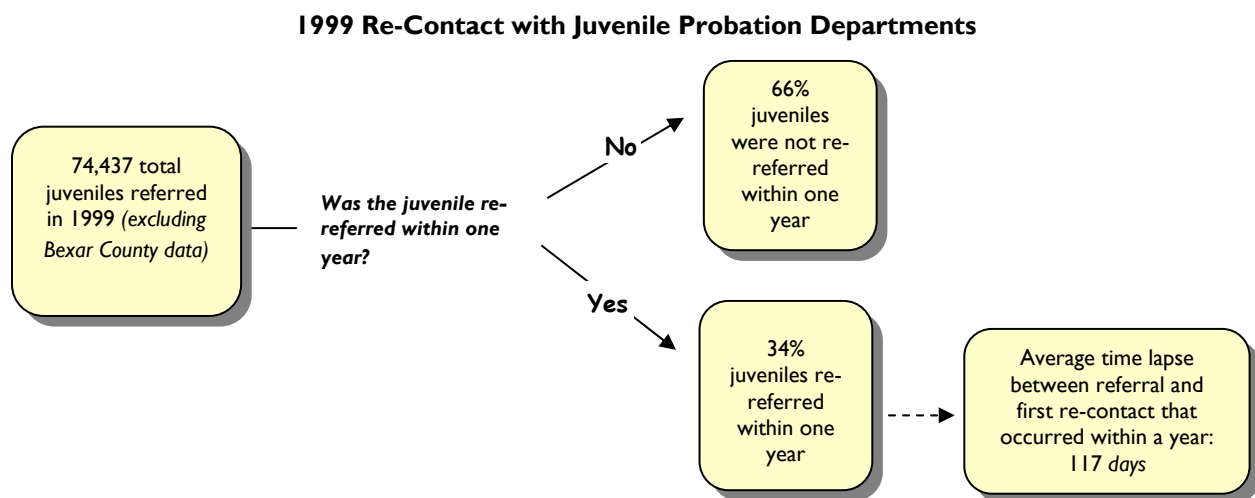
Of those with prior referrals, 41% had a felony as the most severe offense in their referral history; 44% had a misdemeanor A or B offense as the most serious offense; and 15% had a CINS offense as the most serious offense.

## Juvenile History for Referrals in 2000



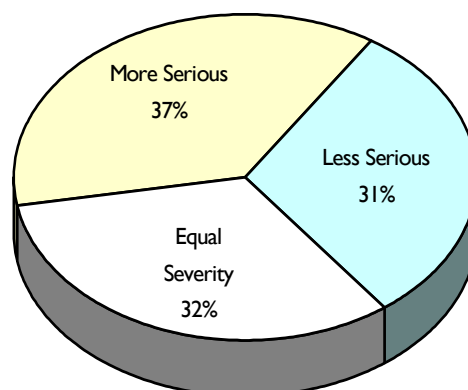
As illustrated on the chart above, two thirds of the juveniles referred in 1999 did not have a re-contact (i.e., a subsequent referral) within one year. The remaining one third did return within the year with a subsequent referral. This subsequent contact occurred an average of 117 days after the first referral in 1999.

Of those whose first referral in 1999 was for a felony offense, 34% had a re-contact with the probation department. For misdemeanor A or B offenses, 30% had a re-contact; for violation of probation, 49% had a re-contact; and for CINS offenses, 37% had a re-contact.



When a subsequent referral did occur, slightly more than one-third (36.8%) of the juveniles were referred with a more serious offense on the initial re-contact; one-third (32.4%) returned with an offense of equal severity; and slightly less than one-third (30.8%) returned with a less severe offense.

**Offense Severity Rate of Initial Re-Contact with Juvenile Probation**



## Referrals

## Offense Distribution

The percent of total referrals that was for alleged felony offenses has remained consistently just over 20 percent during the past three years. Of this number, the percent referred for violent felony offenses has increased very slightly, while the percent of non-violent felony offenses has slightly decreased.

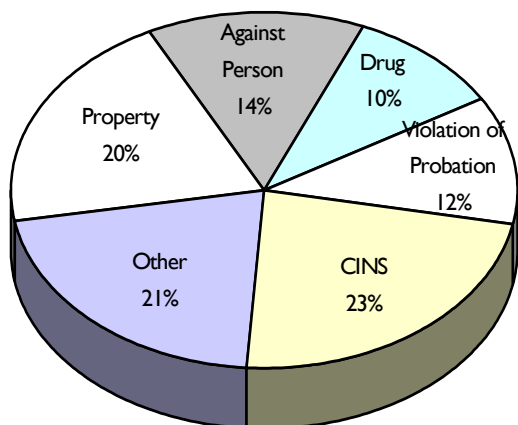
While as a percent of total referrals, violent felony referrals slightly increased, the actual number of referrals decreased 2.5%, from 6,509 in 1999 to 6,346 in 2000. Of these, the greatest percentage decrease occurred in homicide referrals – down 36.5%, from 123 in 1999 to 78 in 2000.

The category of misdemeanor A & B violations (which also include contempt of magistrate orders) slightly increased as a percent of total referrals over the past three years. Nearly half (44.9%) of all referrals in 2000 were for these alleged, non-felony delinquent offenses.

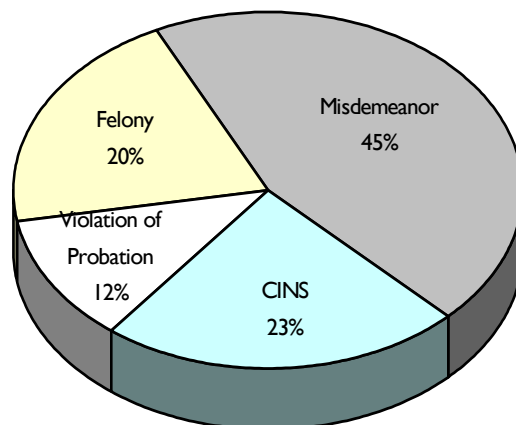
Violation of probation order referrals have increased consistently as a percentage of total referrals. This was the only broad category of referral type that total numbers increased from the previous year – from 12,635 in 1999 to 13,111 in 2000.

The number of CINS offense referrals decreased 12.0%, from 29,666 in 1999 to 26,116 in 2000. As a percent of the total number of referrals, they have steadily decreased over the past three years. The number of status offense referrals decreased by 7.4%, while the remainder of the CINS change occurred with misdemeanor C and other non-status CINS offenses.

**Referrals by Offense Category in 2000**



**Referrals by Offense Type in 2000**



## Dispositions

## Disposition Types

Dispositions were made in 112,452 juvenile cases in calendar year 2000. Juvenile probation departments disposed of 50,962 of these cases, with 9,458 cases dismissed or withdrawn, 26,270 cases given supervisory caution, and 15,234 cases placed on deferred prosecution.

Juvenile prosecutors resolved an additional 15,157 cases. Prosecutors disposed of 1,120 cases with supervisory caution and 3,683 with deferred prosecution. No probable cause was found on 3,283 referrals, while 7,017 were refused and non-suited.

The remaining 46,333 cases were resolved by the juvenile court. Of these, the court ordered supervisory caution to 924 cases; deferred prosecution on 1,908 cases; adjudicated new or modified probation to 28,173 cases; certified and transferred to adult court 198 cases; adjudicated and committed to TYC 2,650 cases (2,508 with indeterminate sentences and 142 with determinate sentences); and consolidated, transferred, dismissed, or found not guilty 12,480 cases.

### Dispositions by Offense Severity in 2000

	CINS	Violation of Probation	Misdemeanor A & B	Felony	Total
<b>Supervisory Caution</b>	13,708 60.0%	4,754 42.8%	8,492 18.9%	1,219 6.5%	<b>28,173</b> <b>28.9%</b>
<b>Deferred Prosecution</b>	2,971 13.0%	4 0.0%	13,390 29.9%	2,364 12.7%	<b>18,729</b> <b>19.2%</b>
<b>Adjudicated Probation</b>	820 3.6%	3,490 31.4%	11,721 26.1%	8,526 45.7%	<b>24,557</b> <b>25.2%</b>
<b>TYC</b>	0 0.0%	812 7.3%	380 0.8%	1,182 6.3%	<b>2,374</b> <b>2.4%</b>
<b>Certified as Adult</b>	0 0.0%	0 0.0%	0 0.0%	186 1.0%	<b>186</b> <b>0.2%</b>
<b>Other*</b>	5,350 23.4%	2,049 18.4%	10,871 24.2%	5,192 27.8%	<b>23,462</b> <b>24.1%</b>
<b>Total</b>	<b>22,849</b> <b>100.0%</b>	<b>11,109</b> <b>100.0%</b>	<b>44,854</b> <b>100.0%</b>	<b>18,669</b> <b>100.0%</b>	<b>97,481</b> <b>100.0%</b>

\* Table does not include consolidated dispositions or data on the 7,502 non-consolidated dispositions from Bexar County (data was not available in the categories shown). "Other" includes dispositions of dismissed, withdrawn, no probable cause, refused/non-suited, not guilty, and transferred.

## Race and Gender of Juvenile Dispositions in 2000\*

	African American		Anglo		Hispanic		Other		Total per Disposition
	Female	Male	Female	Male	Female	Male	Female	Male	
Supervisory Caution	2,338 36.5%	3,786 23.3%	4,567 39.0%	6,900 27.2%	3,919 37.2%	6,359 24.3%	80 32.3%	150 24.4%	28,099 28.9%
Deferred Prosecution	1,206 18.8%	2,209 13.6%	2,478 21.2%	5,334 21.0%	2,424 23.0%	4,890 18.7%	51 20.6%	105 17.1%	18,697 19.2%
Adjudicated Probation	1,274 19.9%	5,187 31.9%	1,751 14.9%	6,774 26.7%	1,678 15.9%	7,651 29.2%	23 9.3%	174 28.3%	24,512 25.2%
TYC	80 1.2%	749 4.6%	90 0.8%	607 2.4%	67 0.6%	761 2.9%	4 1.6%	14 2.3%	2,372 2.4%
Certified as Adult	3 0.0%	59 0.4%	3 0.0%	44 0.2%	4 0.0%	67 0.3%	0 0.0%	6 1.0%	186 0.2%
Other*	1,503 23.5%	4,273 26.3%	2,824 24.1%	5,686 22.4%	2,434 23.1%	6,449 24.6%	90 36.3%	166 27.0%	23,425 24.1%
Total per Gender	6,404 100.0%	16,263 100.0%	11,713 100.0%	25,345 100.0%	10,526 100.0%	26,177 100.0%	248 100.0%	615 100.0%	97,291*
Total per Race	22,667 23.3%		37,058 38.1%		36,703 37.7%		863 0.9%		

\* Table does not include: consolidated dispositions, data on the 7,502 non-consolidated dispositions from Bexar County (data was not available in the categories shown), or the 190 cases with missing race data. "Other" includes dispositions of dismissed, withdrawn, no probable cause, refused/non-suited, not guilty, and transferred.

## Dispositions by Age in 2000

	Ages 10 to 12	Ages 13 to 14	Ages 15 to 16	Ages 17+	Total
<b>Supervisory Caution</b>	2,558 28.5%	8,993 29.4%	15,502 28.4%	1,120 33.1%	<b>28,173</b> <b>28.9%</b>
<b>Deferred Prosecution</b>	2,468 27.5%	6,299 20.6%	9,658 17.7%	304 9.0%	<b>18,729</b> <b>19.2%</b>
<b>Adjudicated Probation</b>	2,021 22.6%	7,923 25.9%	14,018 25.7%	595 17.6%	<b>24,557</b> <b>25.2%</b>
<b>TYC</b>	59 0.7%	545 1.8%	1,615 3.0%	155 4.6%	<b>2,374</b> <b>2.4%</b>
<b>Certified as Adult</b>	0 0.0%	8 0.0%	159 0.3%	19 0.6%	<b>186</b> <b>0.2%</b>
<b>All Other*</b>	1,855 20.7%	6,773 22.2%	13,642 25.0%	1,192 35.2%	<b>23,462</b> <b>24.1%</b>
<b>Total</b>	<b>8,961</b> <b>100.0%</b>	<b>30,541</b> <b>100.0%</b>	<b>54,594</b> <b>100.0%</b>	<b>3,385</b> <b>100.0%</b>	<b>97,481</b> <b>100.0%</b>

\* Table does not include: consolidated dispositions or data on the 7,502 non-consolidated dispositions from Bexar County (data was not available in the categories shown). "Other" includes dispositions of dismissed, withdrawn, no probable cause, refused/non-suited, not guilty, and transferred.

# County-by-County Data

Calendar Year 2000

	Total Referrals	Super. Caution	Deferred Pros.	Adjud. Prob.	TYC	Cert. as Adult	Other	Consolidated	Total Dispos.
Anderson	241	6	62	31	2	2	97	32	232
Andrews	91	23	13	35	0	0	5	3	79
Angelina	373	73	86	74	17	2	63	36	351
Aransas	306	23	139	69	9	0	42	5	287
Archer	7	0	1	5	0	0	0	0	6
Armstrong	1	1	1	0	0	0	0	0	2
Atascosa	156	20	39	38	5	0	23	8	133
Austin	64	23	16	6	2	0	15	0	62
Bailey	20	5	2	5	0	0	5	1	18
Bandera	51	15	11	17	0	0	5	3	51
Bastrop	372	75	82	99	14	0	80	25	375
Baylor	10	2	0	5	0	0	2	2	11
Bee	248	14	81	95	1	0	30	3	224
Bell	1,510	521	355	280	42	0	258	64	1,520
Bexar	8,123	141	2,096	3,616	276	12	1,361	1,220	8,722
Blanco	22	2	11	4	0	0	3	0	20
Borden	0	0	0	0	0	0	0	0	0
Bosque	59	14	23	13	1	0	9	5	65
Bowie	740	592	54	44	5	1	72	19	787
Brazoria	2,429	1,576	82	349	42	0	275	88	2,412
Brazos	1,640	760	220	342	24	1	192	90	1,629
Brewster	16	7	6	1	0	0	3	0	17
Briscoe	8	2	0	4	1	0	1	0	8
Brooks	79	6	21	22	2	0	12	6	69
Brown	239	60	67	48	5	1	43	6	230
Burleson	84	22	20	29	1	0	18	13	103
Burnet	181	44	81	13	2	1	21	19	181
Caldwell	290	45	47	116	7	0	74	41	330
Calhoun	167	48	19	63	2	0	27	7	166
Callahan	39	5	24	3	1	0	3	3	39
Cameron	1,776	432	335	465	35	2	287	106	1,662
Camp	14	8	3	0	1	0	4	0	16
Carson	9	1	4	0	0	0	0	0	5
Cass	124	71	21	19	2	0	5	2	120
Castro	54	26	12	11	2	0	6	0	57
Chambers	37	4	0	30	2	0	1	0	37
Cherokee	205	70	68	27	6	0	13	8	192
Childress	11	0	3	3	0	0	4	0	10
Clay	20	6	7	7	1	0	1	0	22
Cochran	25	0	3	21	0	0	2	2	28
Coke	9	0	3	5	0	0	4	0	12
Coleman	49	7	21	11	1	0	7	9	56
Collin	1,277	217	351	283	9	0	268	91	1,219
Collingsworth	6	0	6	0	0	0	0	0	6
Colorado	113	18	25	26	1	0	41	12	123
Comal	478	79	120	104	3	0	119	47	472
Comanche	28	3	4	5	0	0	11	0	23
Concho	13	1	3	5	0	0	3	0	12
Cooke	61	4	16	27	2	0	9	3	61
Coryell	258	61	111	63	7	0	20	16	278
Cottle	5	0	0	0	1	0	1	1	3
Crane	9	3	0	4	0	0	2	1	10
Crockett	10	3	0	3	0	0	2	1	9
Crosby	32	1	11	15	1	0	0	0	28
Culberson	6	0	0	2	0	0	0	0	2
Dallam	63	45	4	9	0	0	10	0	68
Dallas	10,015	1,730	3,102	2,562	276	13	1,766	438	9,887
Dawson	185	122	27	30	1	0	3	2	185

# County-by-County Data

Calendar Year 2000

	Total Referrals	Super. Caution	Deferred Pros.	Adjud. Prob.	TYC	Cert. as Adult	Other	Consolidated	Total Dispos.
Deaf Smith	359	96	152	88	13	0	7	18	374
Delta	26	8	5	10	1	0	2	0	26
Denton	1,975	147	372	764	48	2	105	342	1,780
Dewitt	202	103	9	51	7	0	13	23	206
Dickens	18	6	1	9	1	0	0	2	19
Dimmit	59	9	34	5	1	0	1	9	59
Donley	2	1	2	1	0	0	0	0	4
Duval	216	55	64	9	0	0	44	3	175
Eastland	41	7	12	13	0	0	3	1	36
Ector	816	201	64	156	3	1	254	35	714
Edwards	3	0	3	0	0	0	0	0	3
Ellis	294	75	45	101	18	0	54	19	312
El Paso	2,776	0	681	768	73	0	980	188	2,690
Erath	108	13	46	26	3	0	20	6	114
Falls	114	47	27	36	3	0	10	6	129
Fannin	198	52	101	36	1	1	28	1	220
Fayette	53	13	18	20	4	0	6	0	61
Fisher	10	8	0	0	0	0	0	1	9
Floyd	108	46	24	19	2	0	13	0	104
Foard	0	0	0	0	0	0	0	0	0
Fort Bend	1,467	142	337	518	32	1	418	23	1,471
Franklin	37	4	15	10	1	0	5	4	39
Freestone	49	9	13	16	2	0	8	1	49
Frio	164	34	43	12	0	2	38	15	144
Gaines	97	12	17	28	1	0	27	1	86
Galveston	1,524	297	271	486	54	0	474	136	1,718
Garza	29	2	12	9	0	0	6	0	29
Gillespie	47	13	34	1	0	0	1	0	49
Glasscock	0	0	0	0	0	0	0	0	0
Goliad	30	3	17	14	0	0	3	1	38
Gonzales	134	16	40	30	2	1	28	10	127
Gray	114	10	24	87	4	0	0	0	125
Grayson	533	181	97	77	8	1	188	50	602
Gregg	831	252	182	195	12	0	144	99	884
Grimes	73	0	11	27	2	0	77	11	128
Guadalupe	804	401	150	126	35	0	75	50	837
Hale	216	3	56	113	3	0	46	0	221
Hall	3	0	4	0	0	0	0	0	4
Hamilton	23	3	4	8	3	0	5	1	24
Hansford	4	1	1	2	0	0	1	0	5
Hardeman	0	0	0	0	0	0	0	0	0
Hardin	303	131	51	50	9	0	43	10	294
Harris	16,142	1,458	572	5,099	414	72	6,778	717	15,110
Harrison	296	98	44	44	11	0	108	9	314
Hartley	10	3	0	4	1	0	2	1	11
Haskell	17	3	0	4	2	0	7	0	16
Hays	716	272	179	136	7	1	88	32	715
Hemphill	7	3	1	2	0	0	2	0	8
Henderson	381	82	62	55	13	0	117	32	361
Hidalgo	1,830	207	345	392	18	2	685	201	1,850
Hill	114	18	30	52	5	0	26	14	145
Hockley	95	40	10	28	5	0	1	1	85
Hood	302	111	73	60	7	0	55	3	309
Hopkins	148	50	26	52	3	2	24	0	157
Houston	75	30	6	17	0	0	14	7	74
Howard	329	189	30	57	4	0	42	9	331
Hudspeth	10	0	0	0	0	0	0	0	0
Hunt	466	192	27	79	8	0	103	42	451

# County-by-County Data

Calendar Year 2000

	Total Referrals	Super. Caution	Deferred Pros.	Adjud. Prob.	TYC	Cert. as Adult	Other	Consolidated	Total Dispos.
Hutchinson	192	61	69	41	2	0	15	2	190
Irion	7	5	0	1	0	0	3	0	9
Jack	25	2	3	11	1	0	6	0	23
Jackson	81	4	18	30	9	0	5	0	66
Jasper	118	25	36	41	2	0	19	2	125
Jeff Davis	8	4	0	1	0	0	3	0	8
Jefferson	1,481	483	256	236	79	7	308	11	1,380
Jim Hogg	113	0	17	4	0	0	64	4	89
Jim Wells	359	180	111	25	2	0	54	42	414
Johnson	681	211	139	181	14	1	142	140	828
Jones	65	13	29	15	3	2	9	1	72
Karnes	176	40	46	17	1	0	64	9	177
Kaufman	286	121	34	38	6	0	85	7	291
Kendall	82	17	26	14	0	0	18	0	75
Kenedy	0	0	0	0	0	0	0	0	0
Kent	0	0	0	0	0	0	0	0	0
Kerr	460	158	63	99	6	0	111	64	501
Kimble	21	4	4	10	0	0	5	1	24
King	0	0	0	0	0	0	0	0	0
Kinney	4	2	1	2	1	0	1	0	7
Kleberg	164	26	46	41	0	0	71	4	188
Knox	4	0	1	1	2	0	1	0	5
Lamar	114	16	41	42	3	1	6	10	119
Lamb	105	13	31	39	3	0	7	7	100
Lampasas	142	41	42	21	4	3	2	34	147
Lasalle	46	10	33	0	0	0	6	0	49
Lavaca	48	13	9	10	3	0	6	7	48
Lee	63	5	11	28	2	0	6	2	54
Leon	30	12	7	3	0	0	6	0	28
Liberty	233	80	87	7	7	0	34	28	243
Limestone	119	6	21	33	9	1	45	13	128
Lipscomb	17	3	10	4	0	0	0	0	17
Live Oak	40	0	7	19	0	0	10	2	38
Llano	76	15	35	2	1	0	11	13	77
Loving	0	0	0	0	0	0	0	0	0
Lubbock	1,770	355	366	412	50	7	517	239	1,946
Lynn	29	5	6	16	2	0	1	1	31
McCulloch	37	10	11	11	0	0	1	1	34
McLennan	1,910	447	348	319	47	3	383	292	1,839
McMullen	4	0	1	2	0	0	0	0	3
Madison	24	3	15	3	0	0	3	0	24
Marion	24	9	6	3	1	1	7	0	27
Martin	23	7	2	7	1	0	3	2	22
Mason	8	0	7	4	1	0	0	0	12
Matagorda	340	111	37	66	7	0	78	45	344
Maverick	258	124	55	28	1	1	31	5	245
Medina	259	112	88	9	7	0	40	9	265
Menard	8	0	3	3	1	0	1	0	8
Midland	927	434	135	165	6	2	165	86	993
Milam	108	4	32	27	1	1	23	4	92
Mills	8	1	3	2	0	0	1	0	7
Mitchell	77	48	19	9	2	0	1	0	79
Montague	40	7	11	20	1	0	2	0	41
Montgomery	1,289	840	35	166	35	0	235	106	1,417
Moore	165	69	23	24	4	0	25	3	148
Morris	66	7	14	14	0	0	7	7	49
Motley	14	1	2	6	0	0	3	0	12
Nacogdoches	274	83	44	90	11	0	33	9	270



# County-by-County Data

Calendar Year 2000

	Total Referrals	Super. Caution	Deferred Pros.	Adjud. Prob.	TYC	Cert. as Adult	Other	Consolidated	Total Dispos.
Navarro	196	41	52	61	3	1	21	28	207
Newton	12	1	3	1	0	0	6	1	12
Nolan	494	410	43	24	9	0	30	10	526
Nueces	3,369	1,264	544	385	38	2	828	206	3,267
Ochiltree	23	1	4	8	1	0	3	2	19
Oldham	4	0	1	1	0	0	2	0	4
Orange	453	149	54	97	8	1	118	32	459
Palo Pinto	103	13	40	23	10	0	9	5	100
Panola	77	18	28	17	2	0	16	6	87
Parker	442	173	158	59	11	0	54	10	465
Parmer	18	2	5	5	0	0	2	0	14
Pecos	114	41	7	36	0	0	10	10	104
Polk	165	7	32	90	10	1	24	1	165
Potter	1,132	546	244	148	23	8	44	116	1,129
Presidio	10	1	5	5	0	0	1	0	12
Rains	32	1	14	14	1	0	8	0	38
Randall	548	184	44	149	4	0	156	15	552
Reagan	17	5	5	0	0	0	4	0	14
Real	14	7	4	2	0	0	1	1	15
Red River	128	53	21	8	6	1	33	10	132
Reeves	156	20	23	35	0	0	70	2	150
Refugio	63	18	18	8	3	0	4	3	54
Roberts	3	0	1	1	0	0	1	1	4
Robertson	101	1	19	48	4	0	19	9	100
Rockwall	99	34	33	26	0	0	23	3	119
Runnels	57	18	12	15	3	1	9	2	60
Rusk	122	54	30	27	6	0	10	4	131
Sabine	17	2	2	7	0	0	5	1	17
San Augustine	10	0	1	6	1	0	1	1	10
San Jacinto	42	0	12	16	2	0	13	0	43
San Patricio	610	60	297	105	3	1	88	23	577
San Saba	18	1	12	5	0	0	1	4	23
Schleicher	12	1	3	2	0	0	6	0	12
Scurry	181	100	14	18	5	0	10	26	173
Shackelford	7	1	2	2	0	0	3	0	8
Shelby	15	1	9	4	0	0	4	0	18
Sherman	12	4	2	4	1	0	1	0	12
Smith	1,059	144	218	397	39	5	90	136	1,029
Somervell	23	2	8	7	0	0	3	0	20
Starr	336	101	108	59	2	0	38	9	317
Stephens	40	9	9	14	0	1	3	0	36
Sterling	1	1	0	0	0	0	0	0	1
Stonewall	2	0	0	1	0	0	1	0	2
Sutton	25	16	3	1	0	0	5	0	25
Swisher	56	21	14	10	3	0	5	2	55
Tarrant	7,792	3,197	746	1,729	178	6	1,219	387	7,462
Taylor	754	141	314	107	11	1	102	132	808
Terrell	1	0	1	0	0	0	0	0	1
Terry	146	47	45	25	1	0	16	19	153
Throckmorton	0	0	0	1	0	0	0	0	1
Titus	103	35	36	23	2	0	11	2	109
Tom Green	942	246	291	190	10	10	163	142	1,052
Travis	4,675	1,724	433	1,096	133	2	1,152	0	4,540
Trinity	25	2	4	8	0	0	5	0	19
Tyler	83	8	34	2	0	0	21	9	74
Upshur	296	175	84	10	3	0	22	9	303
Upton	21	6	6	2	0	0	5	1	20
Uvalde	276	91	71	30	3	0	41	15	251

# County-by-County Data

Calendar Year 2000

	Total Referrals	Super. Caution	Deferred Pros.	Adjud. Prob.	TYC	Cert. as Adult	Other	Consolidated	Total Dispos.
Val Verde	223	96	118	36	5	0	0	0	255
Van Zandt	284	127	111	20	2	0	30	13	303
Victoria	1,375	1,013	53	188	28	0	47	1	1,330
Walker	157	3	48	67	6	0	48	6	178
Waller	123	51	24	33	1	0	23	0	132
Ward	108	31	25	32	0	0	17	1	106
Washington	130	26	34	49	3	0	13	16	141
Webb	1,743	666	343	321	23	2	249	19	1,623
Wharton	136	2	53	68	7	0	23	2	155
Wheeler	11	0	8	0	0	0	5	0	13
Wichita	896	170	264	157	6	0	206	123	926
Wilbarger	56	6	23	12	1	0	20	0	62
Willacy	58	3	17	21	3	0	3	5	52
Williamson	1,280	290	379	233	19	1	294	60	1,276
Wilson	203	69	69	6	3	0	43	21	211
Winkler	30	6	13	6	1	0	3	0	29
Wise	98	19	31	29	3	0	16	2	100
Wood	158	53	12	45	2	2	12	8	134
Yoakum	61	1	27	23	2	0	11	5	69
Young	54	15	18	26	1	1	9	2	72
Zapata	106	22	51	27	0	0	11	1	112
Zavala	46	6	22	13	1	0	10	5	57
<b>Total</b>	<b>113,146</b>	<b>28,314</b>	<b>20,825</b>	<b>28,173</b>	<b>2,650</b>	<b>198</b>	<b>24,823</b>	<b>7,469</b>	<b>112,452</b>